



Helical Gear Reducers



EUR TRANSMISSION CORP.

[Http://www.motodisco.com.tw](http://www.motodisco.com.tw)

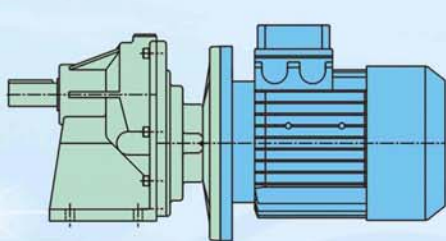
E-mail:moto.disco@msa.hinet.net

- (1) **EUR齒輪減速機** 提供各類型入力側連結法蘭型齒輪減速機，方便組合各廠牌B5、B14馬達、剎車馬達、防爆馬達、DC馬達、伺服馬達或無段變速機等。
- (2) 高強度鋁合金重力壓鑄機體，並且經過熱處理，其強度是一般鑄鐵的120%以上。
- (3) 高強度鋁合金重力壓鑄機體，重量輕、搬運方便並且大大降低機器重量。
- (4) 外表塗裝採用粉體烤漆，不會因高壓清洗或長時間使用而掉漆，能夠永保外表美觀乾淨。
- (5) 內部斜齒輪採用高碳鋼製作，並經過滲碳熱處理以確保齒輪的強度與耐磨性。
- (6) 高精度齒輪研磨加工，確保3600rpm以上高速運轉無噪音、不振動。
- (7) 輸出側法蘭為分離式，方便使用大小不同的法蘭安裝或法蘭與腳座安裝並用（B35安裝）。
- (8) 單台減速機比數從1/1.5~1/270，兩台組合減速比可達1/50000以上。
- (9) 高強度鋁合金機種輸出轉矩850Nm以下。鑄鋼(FCD45)機種輸出轉矩可達8500Nm。

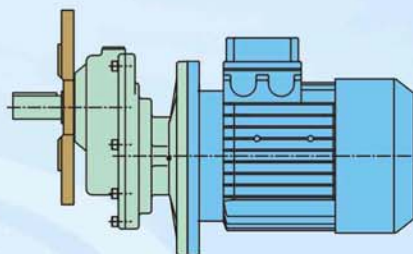
- (1) **EUR Helical Gear Units** provides various flange types of gear reducer for power input side connections, which is adaptable for most of the B5, B14 motor, brake motor, explosions proof motor, DC motor, servomotor or variators....
- (2) High tensile strength aluminum alloy die casting housing body, after heat treatment, intensity is 120% stronger than normal cast iron.
- (3) High tensile strength aluminum alloy die casting housing body, light weight, easier for transportation and greatly reduce the weight of the machine.
- (4) The surface finish is powder painting baking varnish, paint will not falls due to the high-pressured cleaning or even long time use, to ensure a fine external appearance clean and long life.
- (5) High -carbon steel helical gear is used, cementation and heat treatment to guarantee the gear's intensity and the resistance to wear.
- (6) All gears are high accuracy ground, guarantees over than 3600rpm high-speed operation without noise and vibration.
- (7) The output side flange is detachable design to fit all different kinds of flanges, it also interchangeable to fit with foot mount (B35 installment).
- (8) The single unit speed ratio from 1/1.5 ~ 1/270, twin units combination speed ratio up to 1/50000 or over.
- (9) The high tensile strength aluminum alloy models' output torque is under 850Nm. The cast steel (FCD45) models' output torque will be available up to 8500Nm.

一段型齒輪減速機 Single Stage Helical Reducers

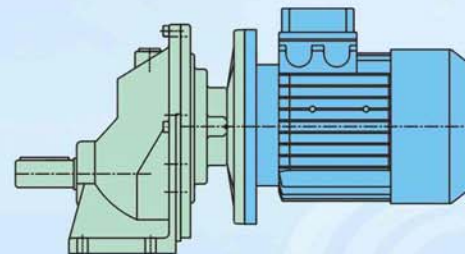
RATIO : 1/1.25 ~ 1/7.5



RT:腳座型 Feet Mount



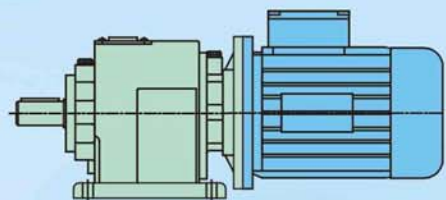
RF:法蘭型 Flange Mount



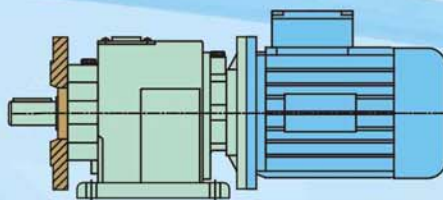
RL:腳座型 Feet Mount

二段／三段型齒輪減速機 2 Stages / 3 Stages

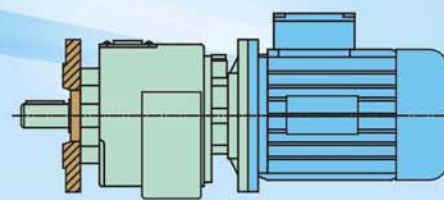
RATIO : 2 Stages : 1/5 ~ 1/45
3 Stages : 1/3 ~ 1/270



SE:腳座型 Feet Mount



SE/F:腳座／法蘭型
Feet With Flange Mount



SEF:法蘭型 Flange Mount

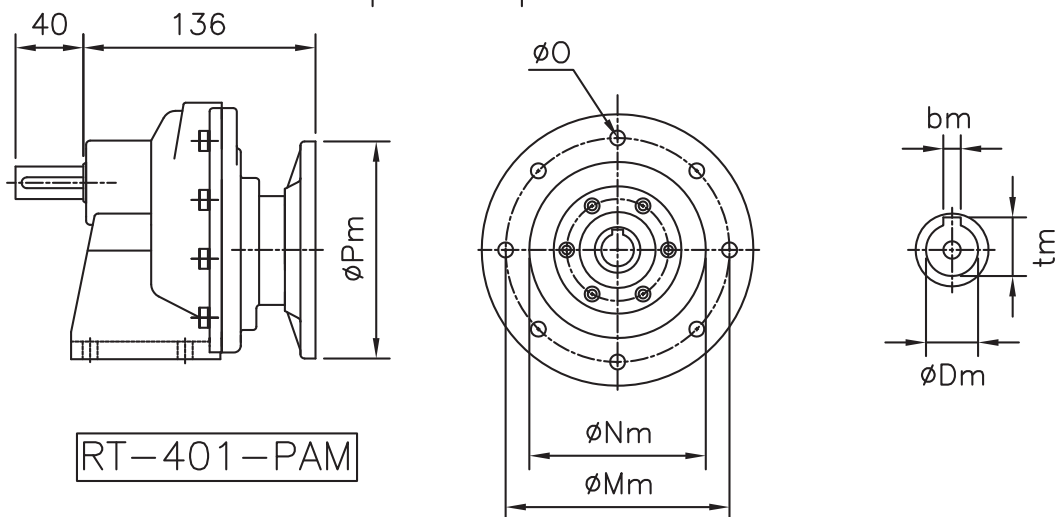
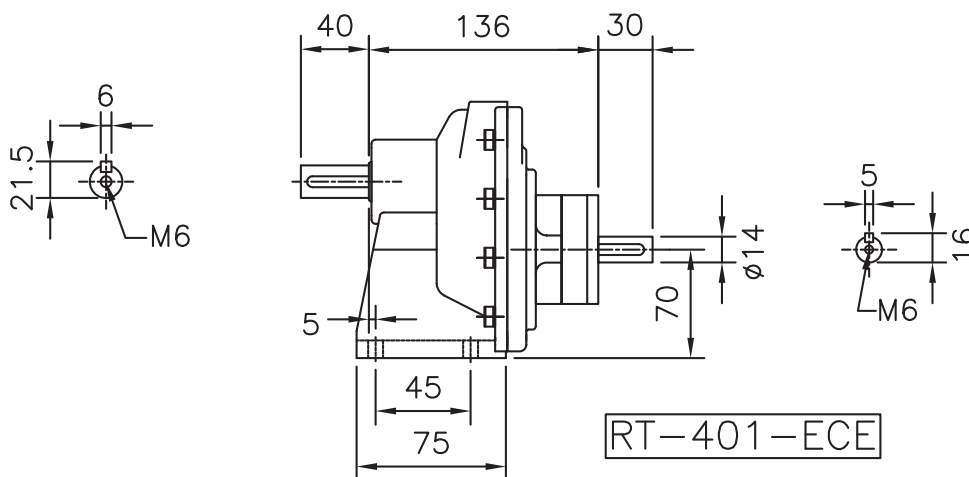
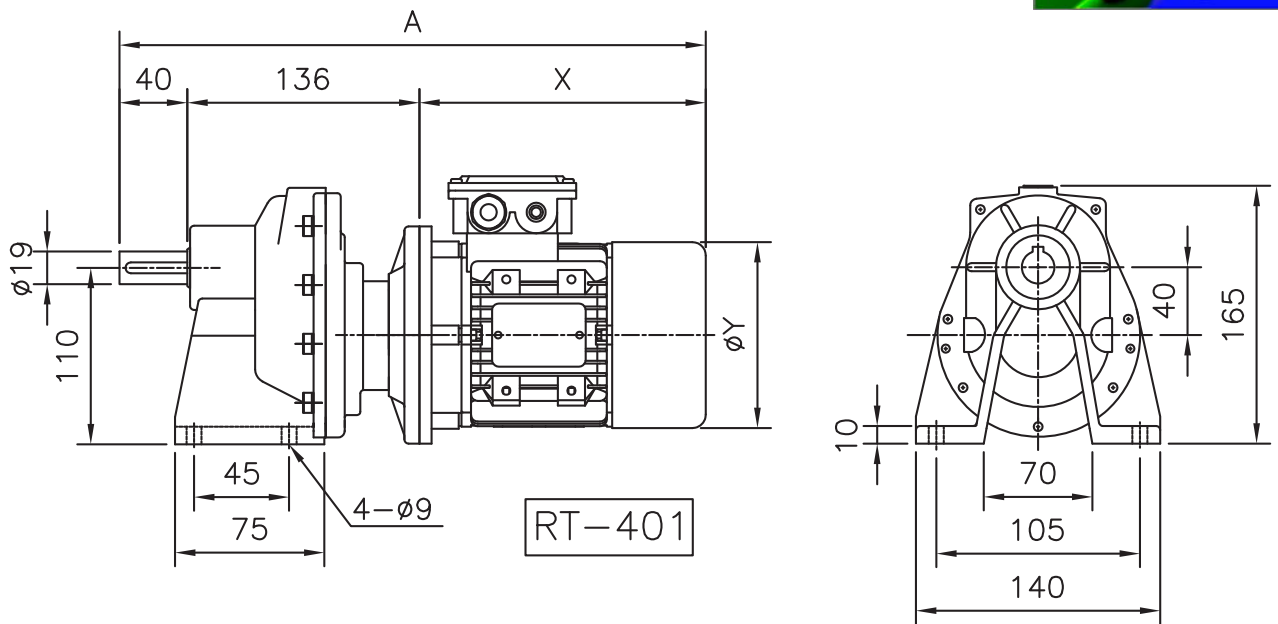
R1 GEAR UNIT PERFORMANCES



SIZE		40			50			63			80			100			125		
i	n1	n2	M2	P1	n2	M2	P1	n2	M2	P1	n2	M2	P1	n2	M2	P1	n2	M2	P1
1.4	2900	2047	28	5.9	2044	100	21	2192	200	45	2044	320	67	2044	570	12	2241	1120	259
	1450	1203	28	3.5	1022	100	11	1096	200	23	1022	400	42	1022	760	0	1120	1520	176
	1000	830	28	2.4	705	100	7.3	756	200	16	705	400	29	705	800	80	773	1600	128
	500	415	28	1.2	352	100	3.6	378	200	7.8	352	400	15	352	800	58	386	1600	64
	200	166	28	0.48	141	112	1.6	151	225	3.5	141	450	6.5	141	900	29	155	1800	29
2	2900	1538	32	5.2	1450	100	15	1423	200	30	1450	360	56	1450	620	96	1450	1240	191
	1450	769	36	3	725	100	7.7	711	200	15	725	400	31	725	780	60	725	1560	120
	1000	531	36	2	500	100	5.3	491	200	10	500	400	21	500	800	43	500	1600	85
	500	265	36	1	250	100	2.7	245	200	5.2	250	400	11	250	800	21	250	1600	43
	200	106	36	0.41	100	112	1.2	98	225	2.4	100	450	4.8	100	900	9.6	100	1800	19
2.5	2900	1204	36	4.6	1128	100	12	1191	200	25	1128	400	48	1128	670	80	1139	1360	165
	1450	602	45	2.9	564	100	6	595	200	13	564	400	24	564	800	48	570	1600	97
	1000	415	45	2	389	100	4.1	411	200	8.7	389	400	17	389	800	33	393	1600	67
	500	208	45	1	194	100	2.1	205	200	4.4	194	400	8.3	194	800	17	196	1600	33
	200	83	45	0.39	78	112	0.93	82	225	2	78	450	3.7	78	900	7.4	79	1800	15
3.15	2900	984	36	3.8	916	100	9.7	918	200	20	916	400	39	916	725	71	934	1490	148
	1450	492	45	2.4	458	100	4.9	459	200	9.8	458	400	20	458	800	39	467	1600	79
	1000	339	50	1.8	316	100	3.4	317	200	6.7	316	400	13	316	800	27	322	1600	55
	500	170	50	0.9	158	100	1.7	158	200	3.4	158	400	6.7	158	800	13	161	1600	27
	200	68	50	0.36	63	112	0.75	63	225	1.5	63	450	3	63	900	6	64	1800	12
3.5	2900	850	38	3.3	850	95	8.3	795	175	14	850	380	33	850	717	63	870	1445	130
	1450	425	45	2	425	95	4.2	397	175	7.2	425	380	17	425	755	33	435	1500	67
	1000	293	47	1.4	293	95	2.9	274	175	4.9	293	380	11	293	755	23	300	1500	46
	500	146	47	0.71	146	95	1.4	137	175	2.5	146	380	5.7	146	755	11	150	1500	23
	200	59	50	0.3	59	105	0.64	55	190	1.1	59	425	2.6	59	850	5.2	60	1700	10
4	2900	725	40	3.1	725	90	6.9	736	150	11.7	725	360	28	725	710	55	690	1400	103
	1450	363	45	1.7	363	90	3.5	368	150	5.9	363	360	14	363	710	27	345	1400	51
	1000	250	45	1.2	250	90	2.4	254	150	4.1	250	360	9.6	250	710	19	238	1400	35
	500	125	45	0.6	125	90	1.2	127	150	2	125	360	4.8	125	710	9.4	119	1400	18
	200	50	50	0.27	50	1000	0.53	51	150	0.81	50	400	2.1	50	800	4.3	48	1600	8.1
5	2900	608	36	2.3	552	71	4.2	571	140	8.5	552	280	16	608	560	36	580	1120	69
	1450	304	36	1.2	276	71	2.1	286	140	4.3	276	280	8.2	304	560	18	290	1120	35
	1000	210	36	0.8	190	71	1.4	197	140	2.9	190	280	5.7	210	560	13	200	1120	24
	500	105	36	0.4	95	71	0.72	98	140	1.5	95	280	2.8	105	560	6.2	100	1120	12
	200	42	40	0.18	38	71	0.29	39	160	0.67	38	320	1.3	42	630	2.8	40	1250	5.3
6.3	2900	446	32	1.5	446	63	3	469	125	6.2	446	250	12	446	500	24	476	1000	51
	1450	223	32	0.76	223	63	1.5	235	125	3.1	223	250	5.9	223	500	12	238	1000	25
	1000	154	32	0.52	154	63	1	162	125	2.2	154	250	4.1	154	500	8.2	164	1000	18
	500	77	32	0.26	77	63	0.52	81	125	1.1	77	250	2	77	500	4.1	82	1000	8.7
	200	31	36	0.12	31	71	0.23	32	140	0.48	31	280	0.92	31	560	1.8	33	1120	3.9
7.4	2900	395	28	1.1	395	56	2.3	373	110	4.2	395	220	9	395	440	18	378	880	34
	1450	198	28	0.57	198	56	1.1	186	110	2.1	198	220	4.5	198	440	9	189	880	17
	1000	136	28	0.39	136	56	0.79	129	110	1.5	136	220	3.1	136	440	6.2	130	880	12
	500	68	28	0.2	68	56	0.39	64	110	0.73	68	220	1.5	68	440	3.1	65	880	5.9
	200	27	32	0.09	27	70	0.2	26	120	0.32	27	240	0.67	27	490	1.4	26	990	2.7

i: 減速比 n1: 輸入轉速 (1/min) n2: 輸出轉速 (1/min) M2: 輸出轉矩 (Nm) P1: 輸入馬力 (kw)

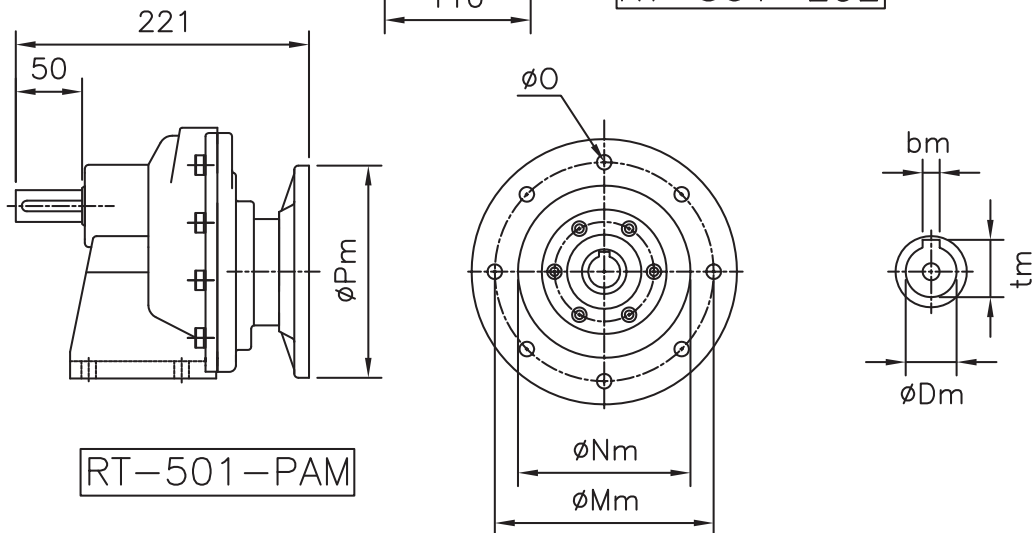
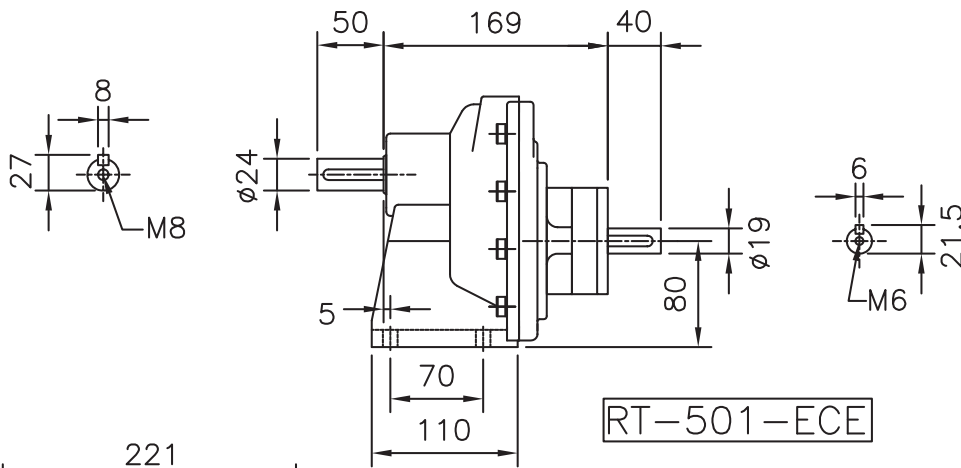
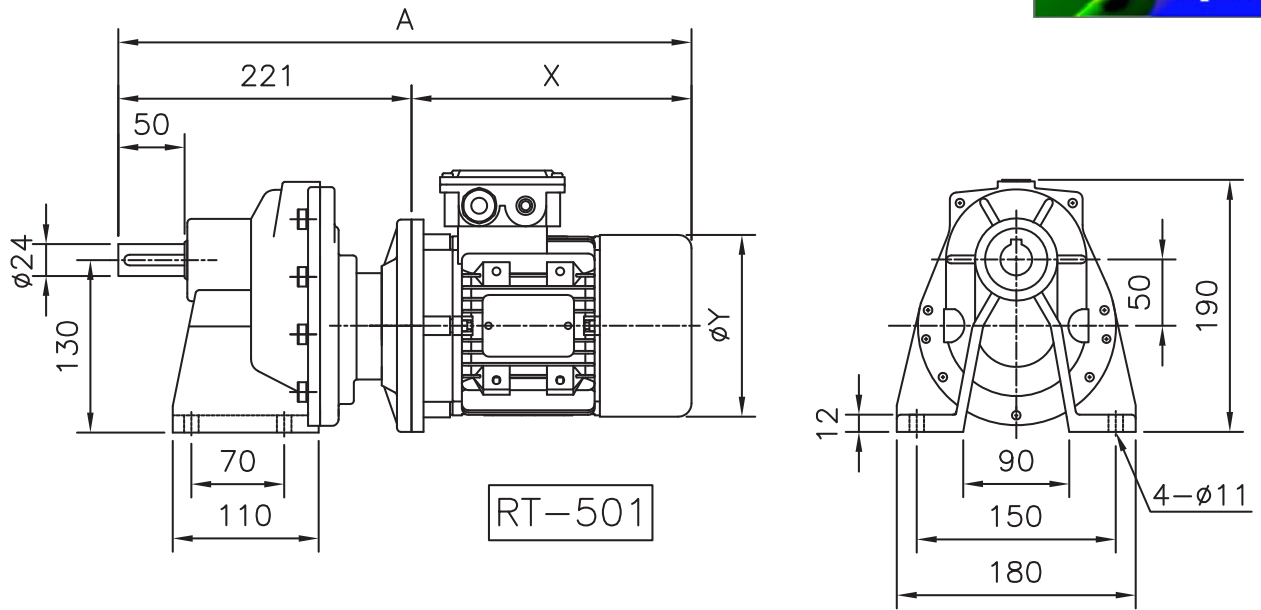
RT401—Dimensions 尺寸圖



減速比：1/1.272、1.586、1.884、2.125、2.409、2.947、3.166、3.411、4、4.769、5.25、6.5

規格/TYPE	A	X	Y	Z	入力中空軸&法蘭/Input Shsft & Flange							重量 kg
					Dm	bm	tm	Pm	Mm	Nm	Om	
RT-401	342	192	122	110	11	4	12.7	140	115	95	4-9	3.6
	361	211	137	117	14	5	16.2	105	85	70		
	400	250	158	137	19	6	21.7	120	100	80	4-11	
					19	6	21.7	200	165	130		

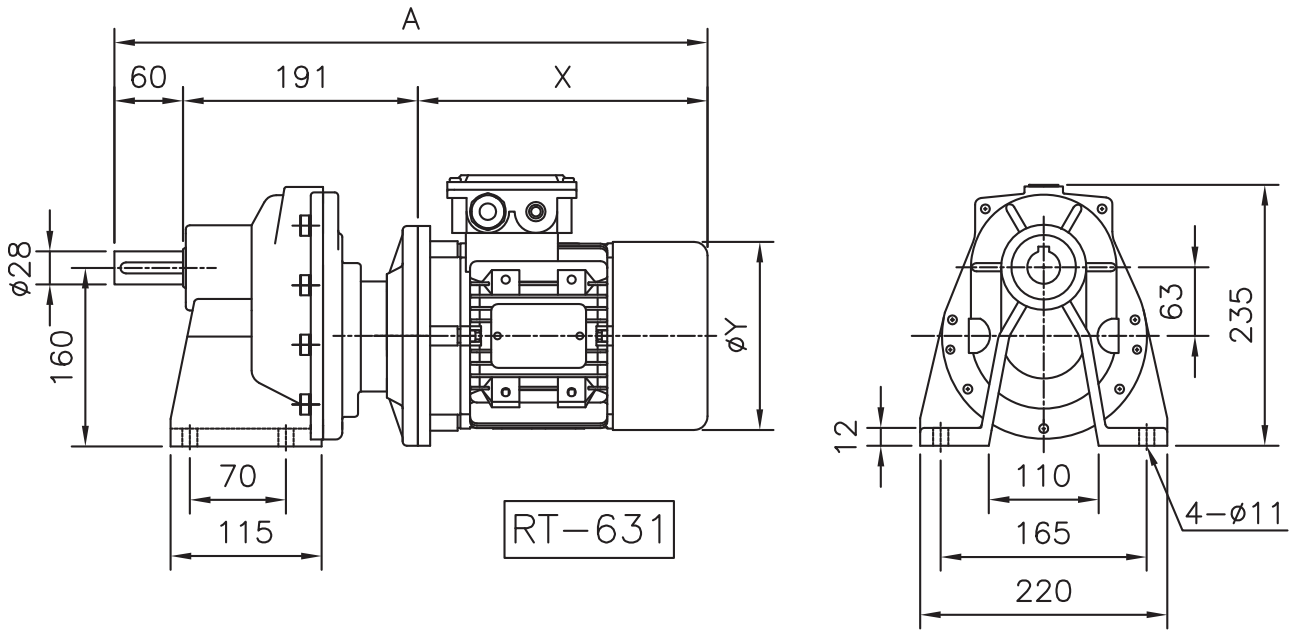
RT501 – Dimensions 尺寸圖



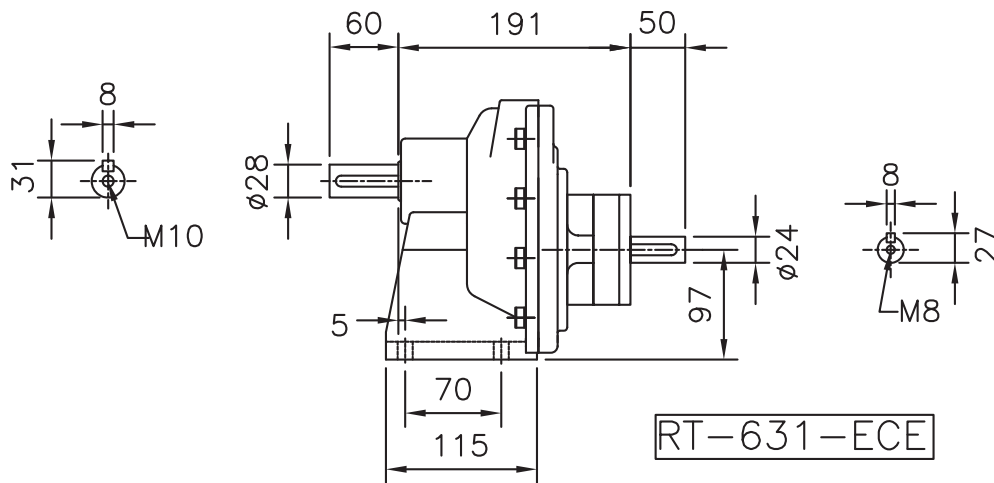
減速比：1/1.272、1.586、2、2.571、3.166、4、5.25、6.5

規格/TYPE	A	X	Y	Z	入力中空軸&法蘭/Input Shsft & Flange						重量 kg	
					Dm	bm	tm	Pm	Mm	Nm		Om
RT-501	375	192	122	110	11	4	12.7	140	115	95	4-9	5.5
	394	211	137	117	14	5	16.2	105	85	70		
					14	5	16.2	160	130	110		
	433	250	158	137	19	6	21.7	120	100	80	4-11	
					19	6	21.7	200	165	130		
	473	290	175	145	24	8	27.2	140	115	95		
24					8	27.2	200	165	130			

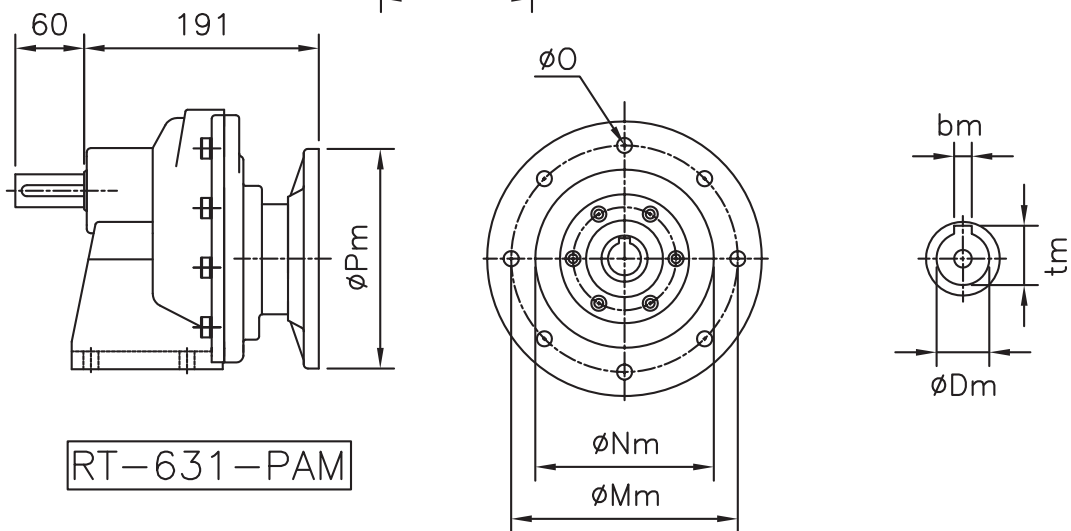
RT631 – Dimensions 尺寸圖



RT-631



RT-631-ECE

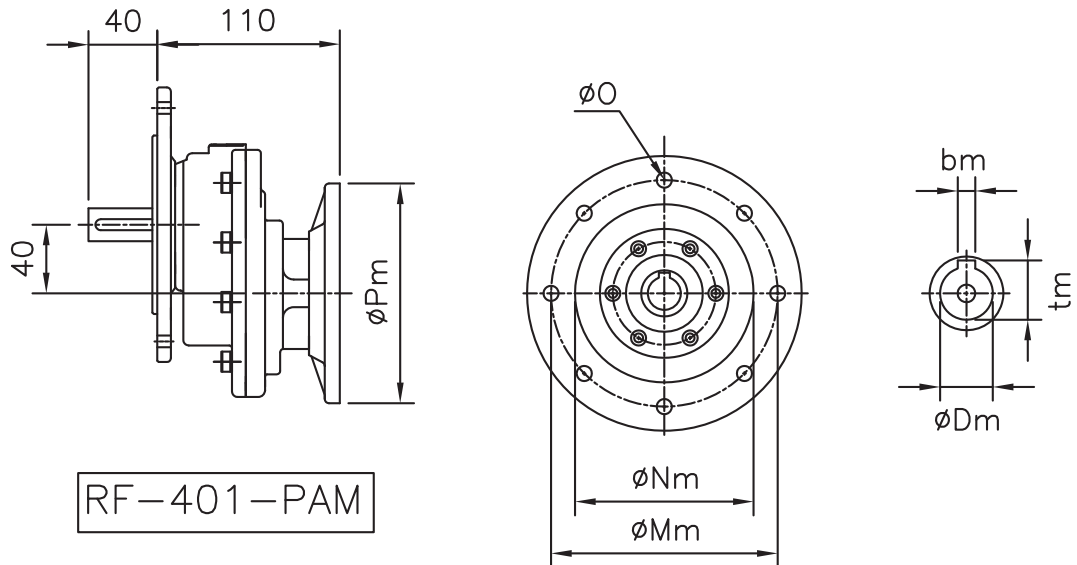
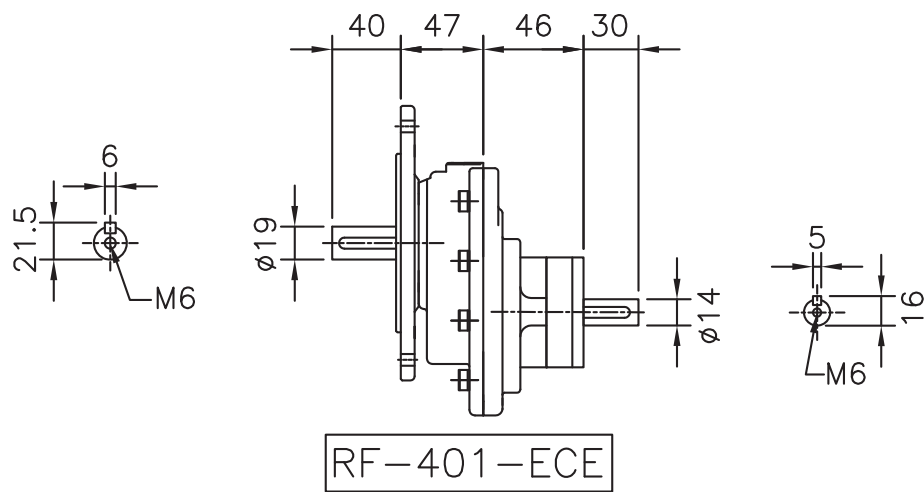
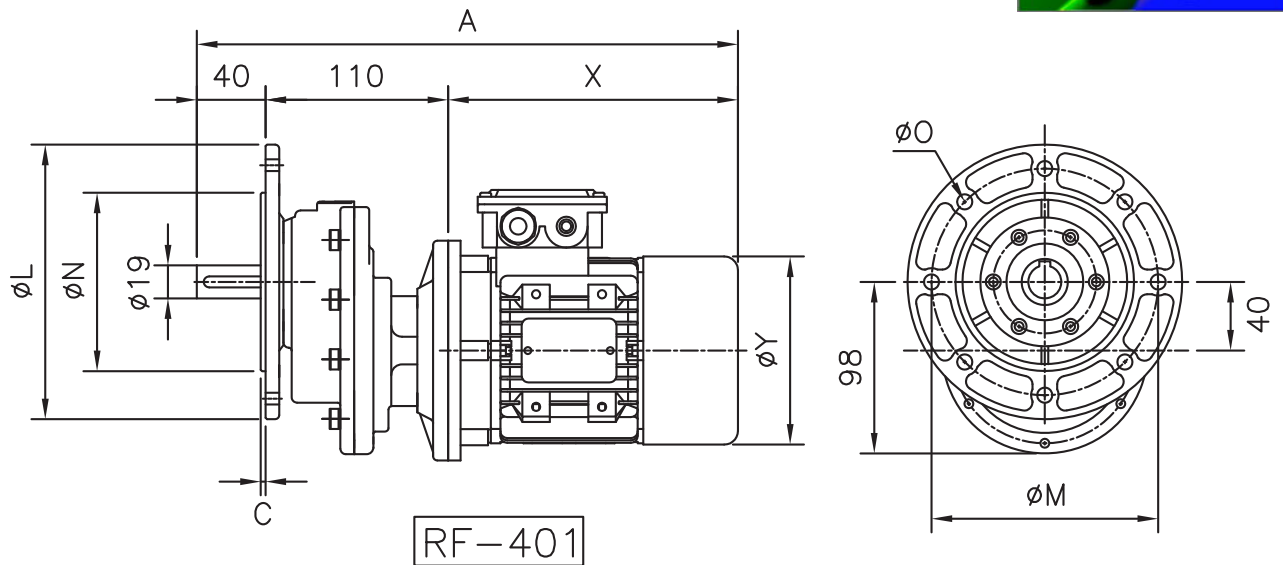


RT-631-PAM

減速比：1/2.038、2.434、3.157、3.937、5.076、6.181

規格/TYPE	A	X	Y	Z	入力中空軸&法蘭/Input Shsft & Flange							重量 kg
					Dm	bm	tm	Pm	Mm	Nm	Om	
RT-631	504	290	175	145	24	8	27.2	200	165	130	Om	10.2
	519	305	197	152	28	8	31.2	160	130	110	4-11	
					28	8	31.2	250	215	180		
					28	8	31.2	215	115	95		
549	335	220	180	28	8	31.2	200	165	130	4-14		
				28	8	31.2	200	165	130			

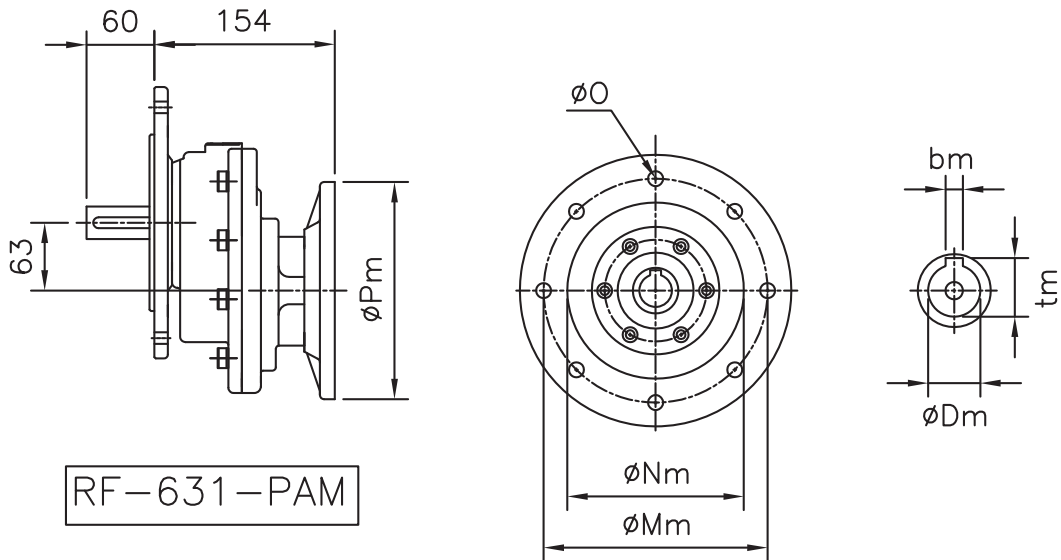
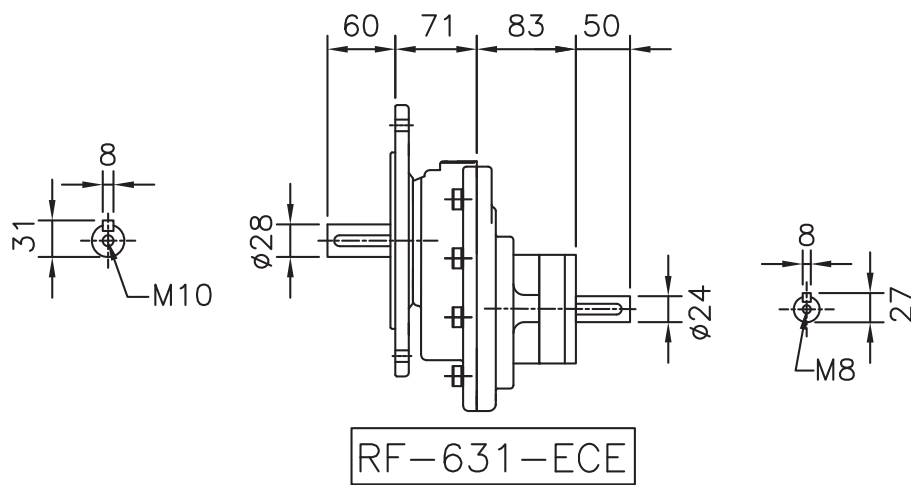
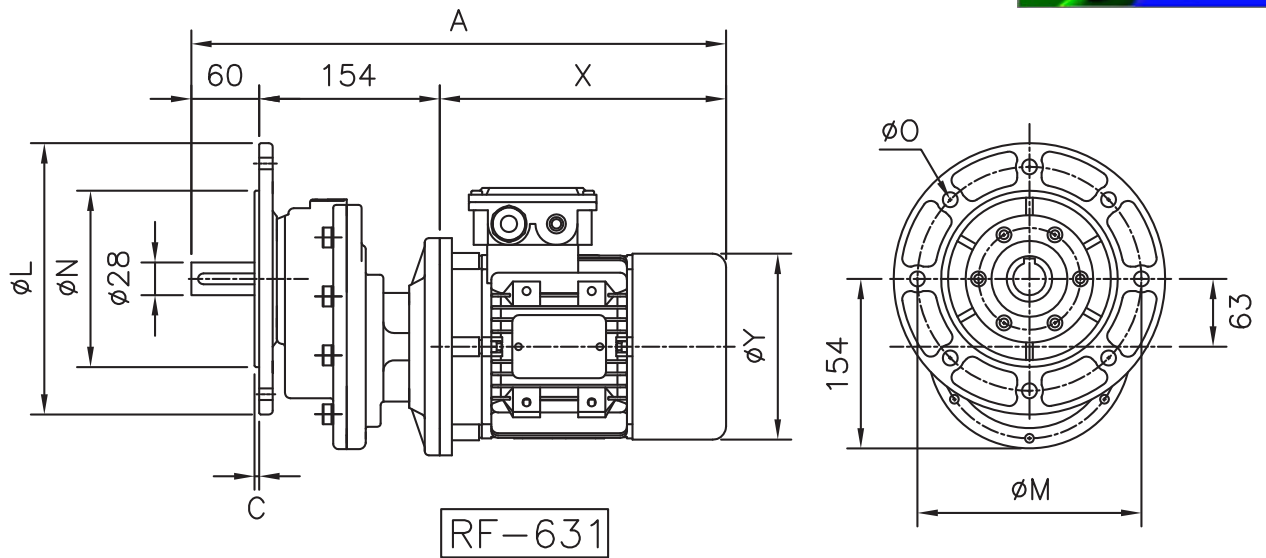
RF401-Dimensions 尺寸圖



減速比：1/2.409、3.166、4.769、6.5

規格/TYPE	A	X	Y	Z	入力中空軸&法蘭/Input Shst & Flange						出力法蘭/Output Flange					重量 kg	
					Dm	bm	tm	Pm	Mm	Nm	Om	C	L	M	N		O
RF-401	342	192	122	110	11	4	12.7	140	115	95	4-9	3.5	FA	140	115	95	3.4
	361	211	137	117	14	5	16.2	105	85	70							
					14	5	16.2	160	130	110							
	400	250	158	137	19	6	21.7	120	100	80	4-11		FB	160	130	110	
19					6	21.7	200	165	130	FC		200					165

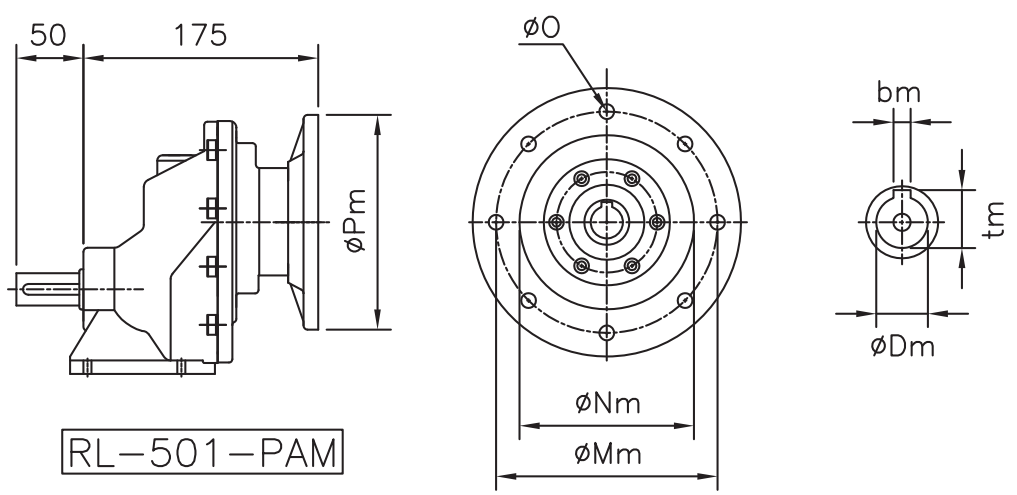
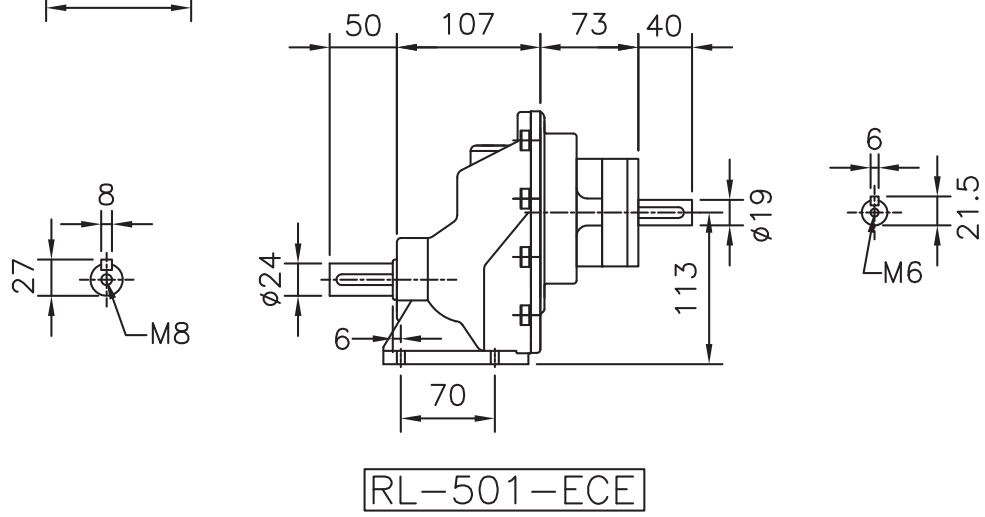
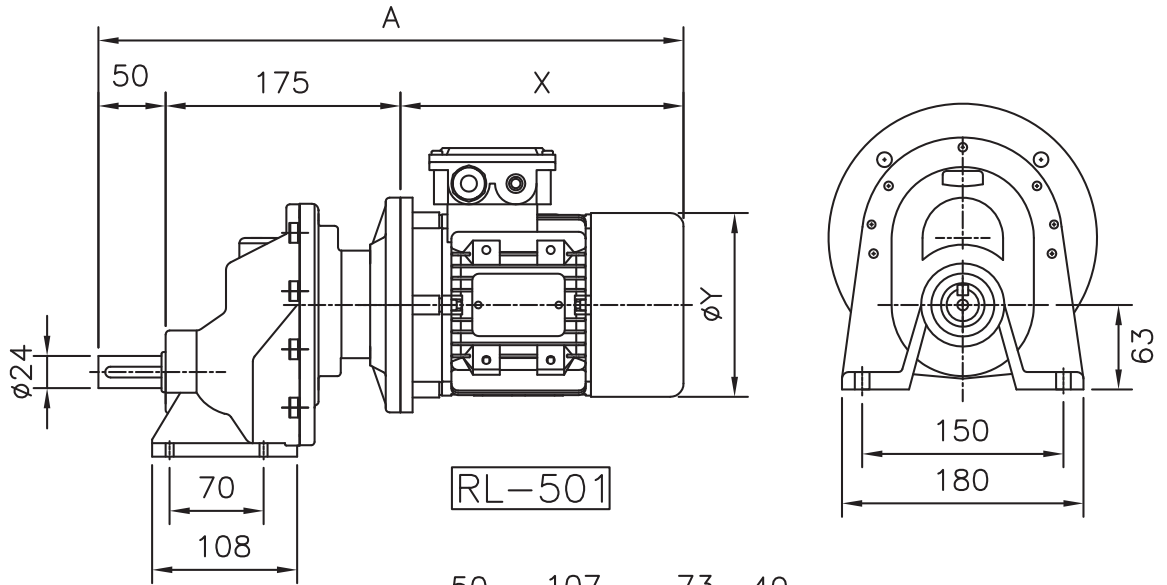
RF631—Dimensions 尺寸圖



減速比：1/2.038、2.434、3.157、3.937、5.076、6.181

規格/TYPE	A	X	Y	Z	入力中空軸&法蘭/Input Shsft & Flange							出力法蘭/Output Flange					重量 kg	
					Dm	bm	tm	Pm	Mm	Nm	Om	C	L	M	N	O		
RF-631	504	290	175	145	24	8	27.2	200	165	130	4-11	FA	3.5	140	115	95	4-9	8.5
	519	305	197	152	28	8	31.2	160	130	110	4-14			FB	160	130		
					28	8	31.2	250	215	180		FC	200		165	130	4-11	
	549	335	220	180	28	8	31.2	215	115	95			FD	4	250	215	180	
					28	8	31.2	200	165	130								

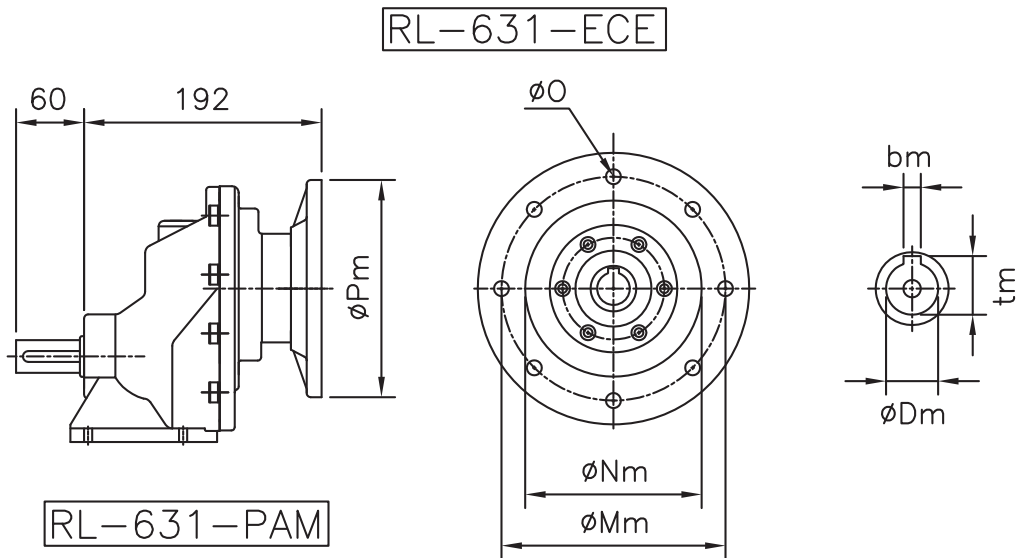
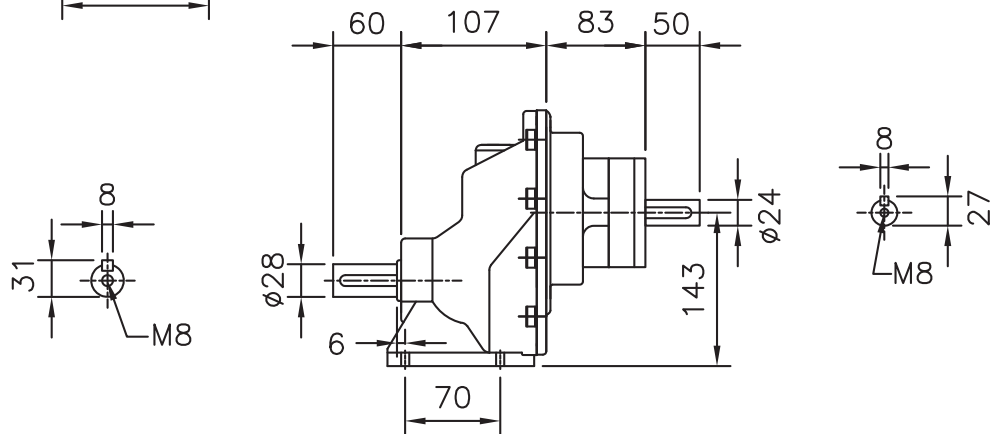
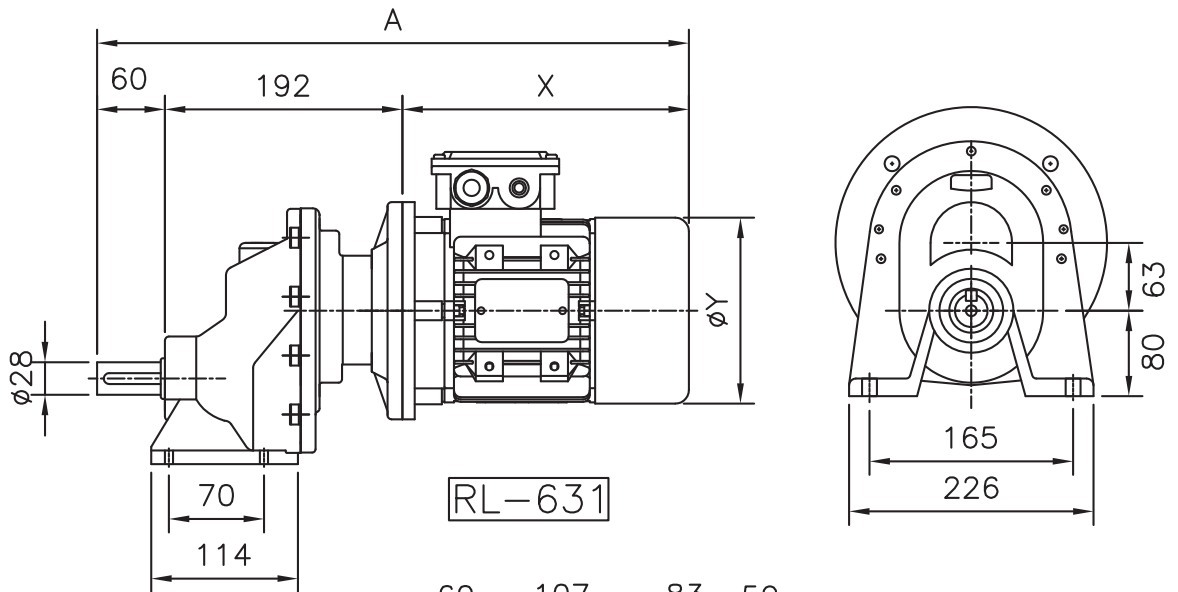
RL501 – Dimensions 尺寸圖



減速比：1/1.272、1.586、2、2.571、3.166、4、5.25、6.5

規格/TYPE	A	X	Y	Z	入力中空軸&法蘭/Input Shsft & Flange						重量 kg	
					Dm	bm	tm	Pm	Mm	Nm		Om
RL-501	375	192	122	110	11	4	12.7	140	115	95	4-9	5.5
	394	211	137	117	14	5	16.2	105	85	70		
	433	250	158	137	14	5	16.2	160	130	110		
	473	290	175	145	19	6	21.7	120	100	80	4-11	
					19	6	21.7	200	165	130		
					24	8	27.2	140	115	95		
				24	8	27.2	200	165	130			

RL631-Dimensions 尺寸圖



減速比：1/2.038、2.434、3.157、3.937、5.076、6.181

規格/TYPE	A	X	Y	Z	入力中空軸&法蘭/Input Shsft & Flange							重量 kg
					Dm	bm	tm	Pm	Mm	Nm	Om	
RL-631	504	290	175	145	24	8	27.2	200	165	130	4-11	10.2
	519	305	197	152	28	8	31.2	160	130	110	4-14	
					28	8	31.2	250	215	180		
					28	8	31.2	215	115	95		
549	335	220	180	28	8	31.2	200	165	130			